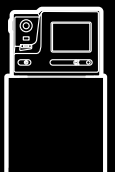




Litho DK30

HOLMIUM LASER





Litho DK30

30W HOLMIUM:YAG FOR LITHOTRIPSY

Litho DK30 surgical unit is a desktop device based on Holmium (Ho:YAG) laser with emission at 2100 nm wavelength.

This wavelength is highly absorbed by water and biological tissue providing excellent cutting, ablation and hemostatic properties.

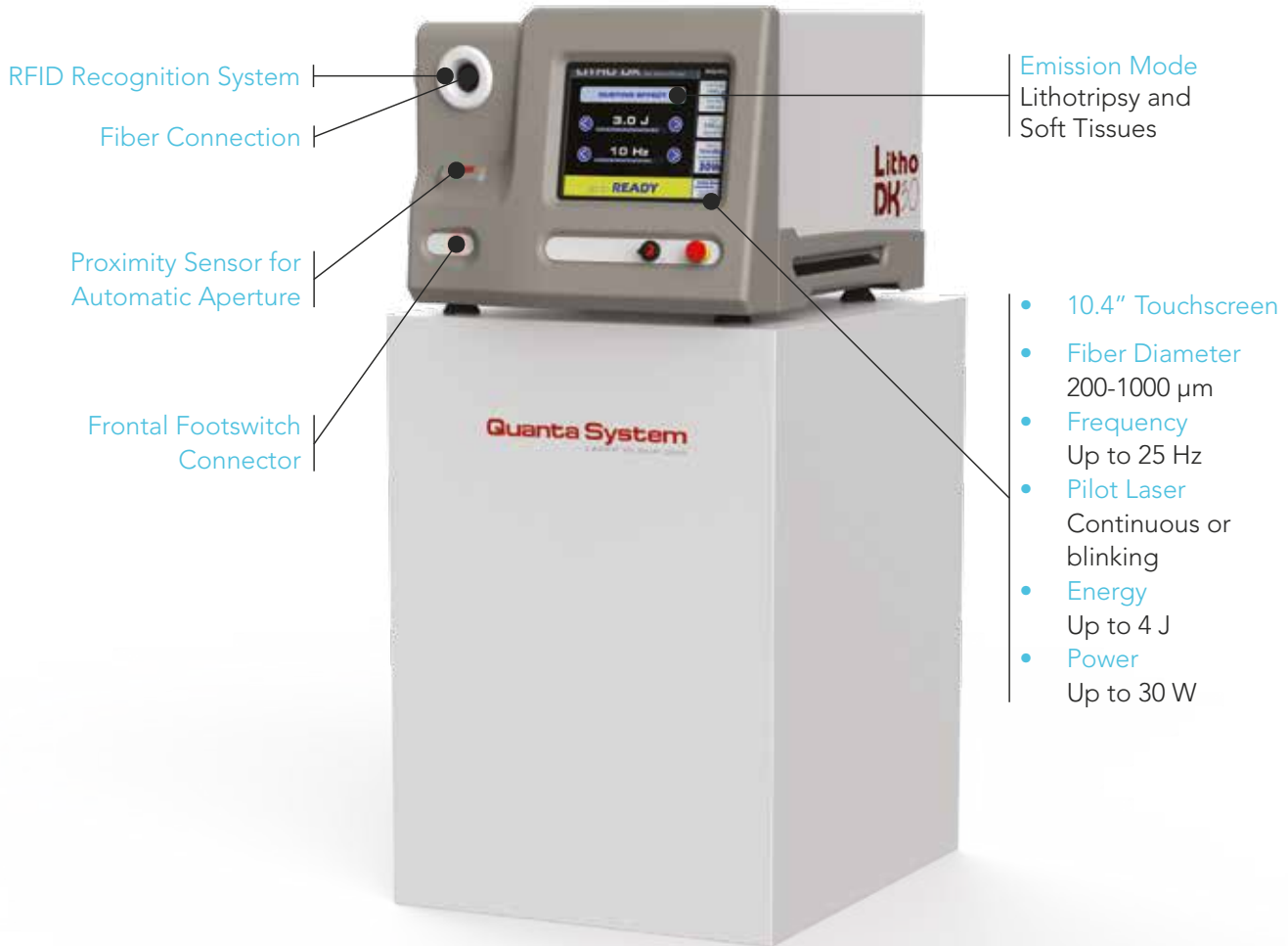
The limited radiation penetration (0.3 - 0.4 mm) results in minimal damages to surrounding tissue. The **Litho DK30** automatically adjusts the emission settings based on fiber diameter and selected mode.

General Overview

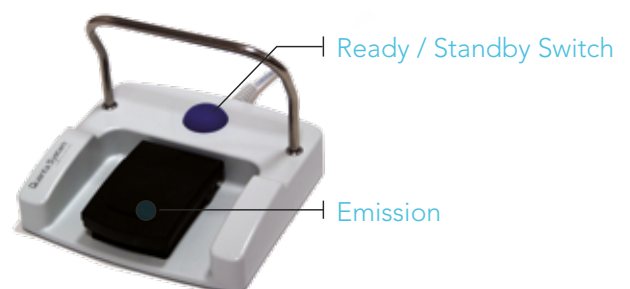
- ✓ Effective Lithotripsy
- ✓ Reduced Depth of Penetration
- ✓ High Versatility
- ✓ Soft Tissue Surgery
- ✓ Compact Design
- ✓ Quick ROI
- ✓ Proximity Sensor



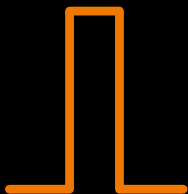
COMPACT DESKTOP DESIGN



Footswitch



Fragmentation



**SHORT
PULSE**



HIGH PULSE ENERGY

Up to 4 J, for superior pulse energy range



TREAT ALSO THE HARDEST STONES

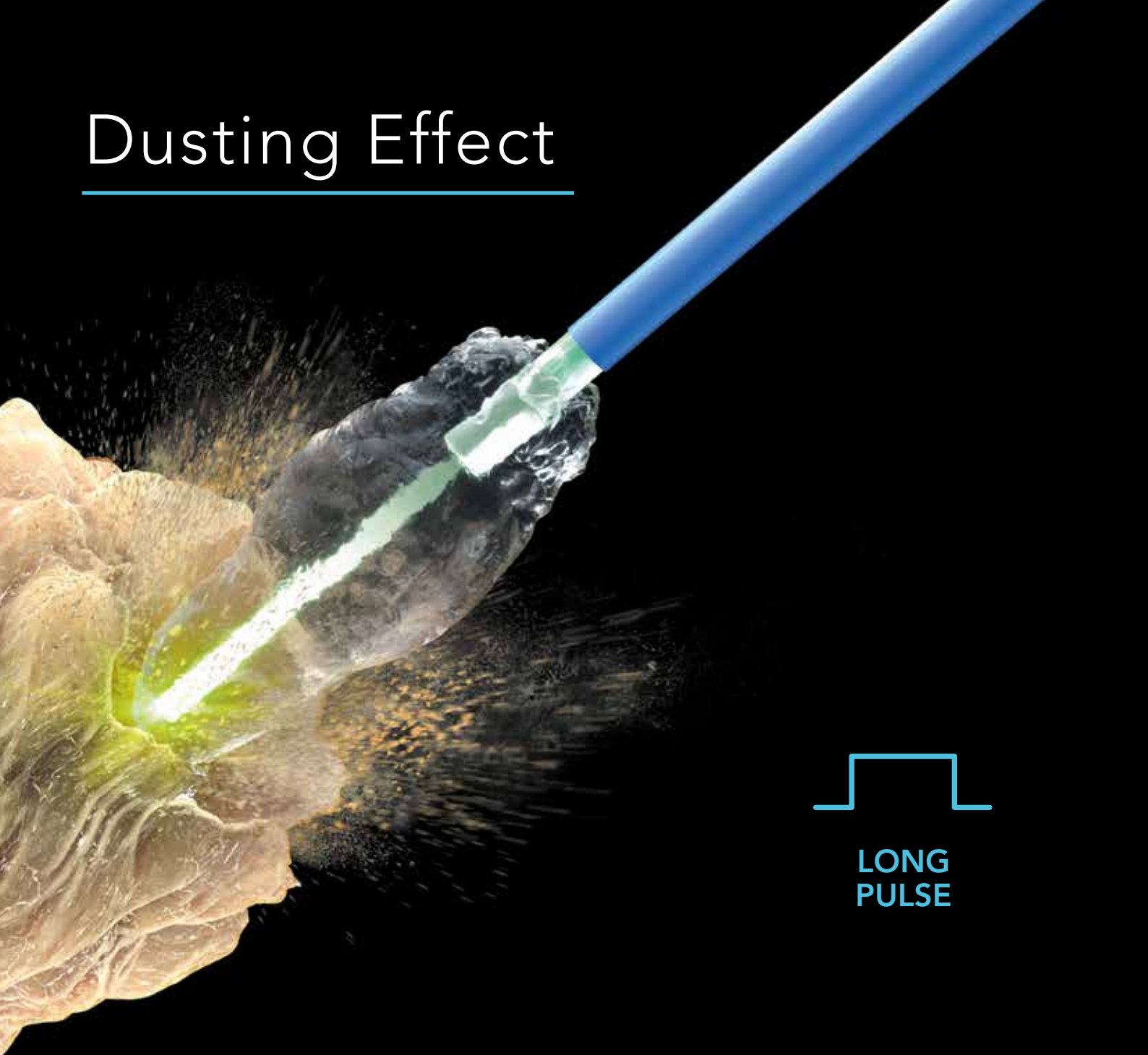
Greater pulse energy allows to break harder stones



COLLECTION BASKET NEEDED

Retrieve stone pieces upon fragmentation

Dusting Effect



**LONG
PULSE**

LONG PULSE WIDTH
Up to 1500 μ s, for smooth ablation



LIMITED RETROPULSION
Easy ablation with no need to chase stone



NO NEED FOR BASKET
The obtained fine dust obviates the retrieval phase



Settings Matter

HIGH POWER
Up to 30 W,
for fast tissue incision



HIGH PULSE ENERGY
Up to 4 J,
for the fragmentation of the
hardest stones



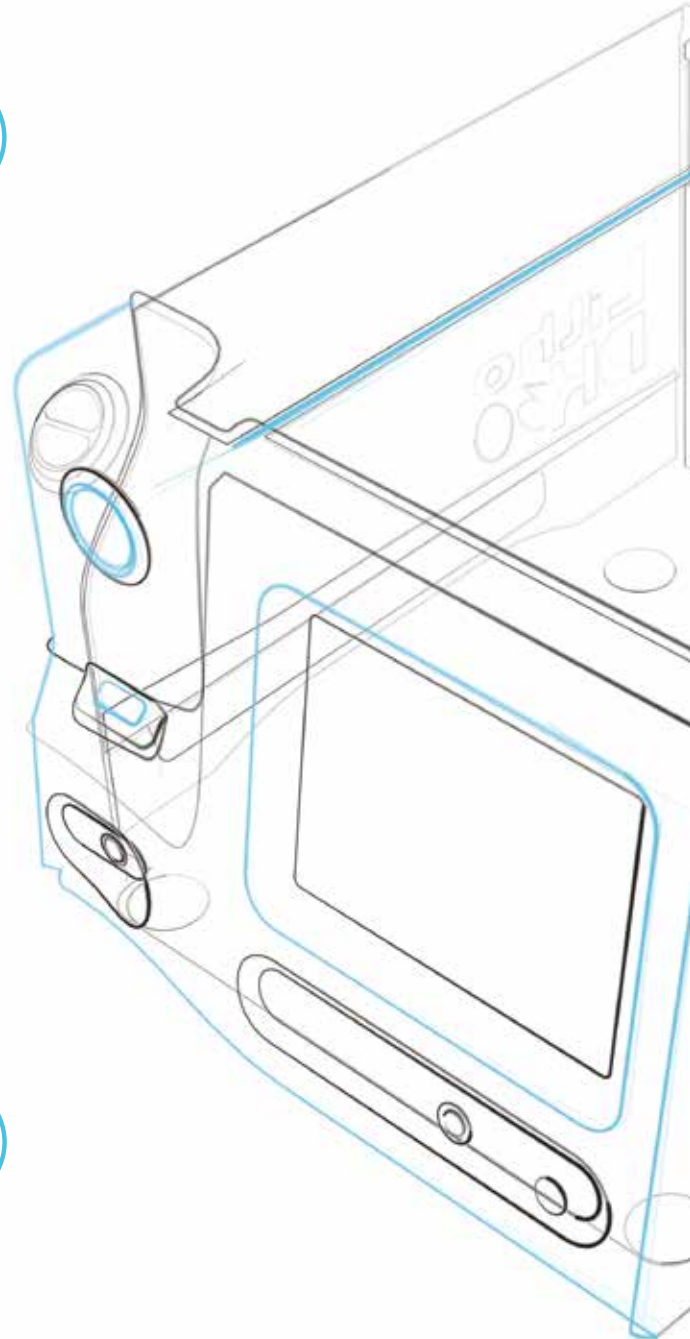
HIGH FREQUENCY
Up to 25 Hz,
for fast low energy ablation



LARGE PULSE WIDTH RANGE
Up to 1500 μ s,
for superior *Dusting* lithotripsy



FLEXIBILITY
High power also with small fibers



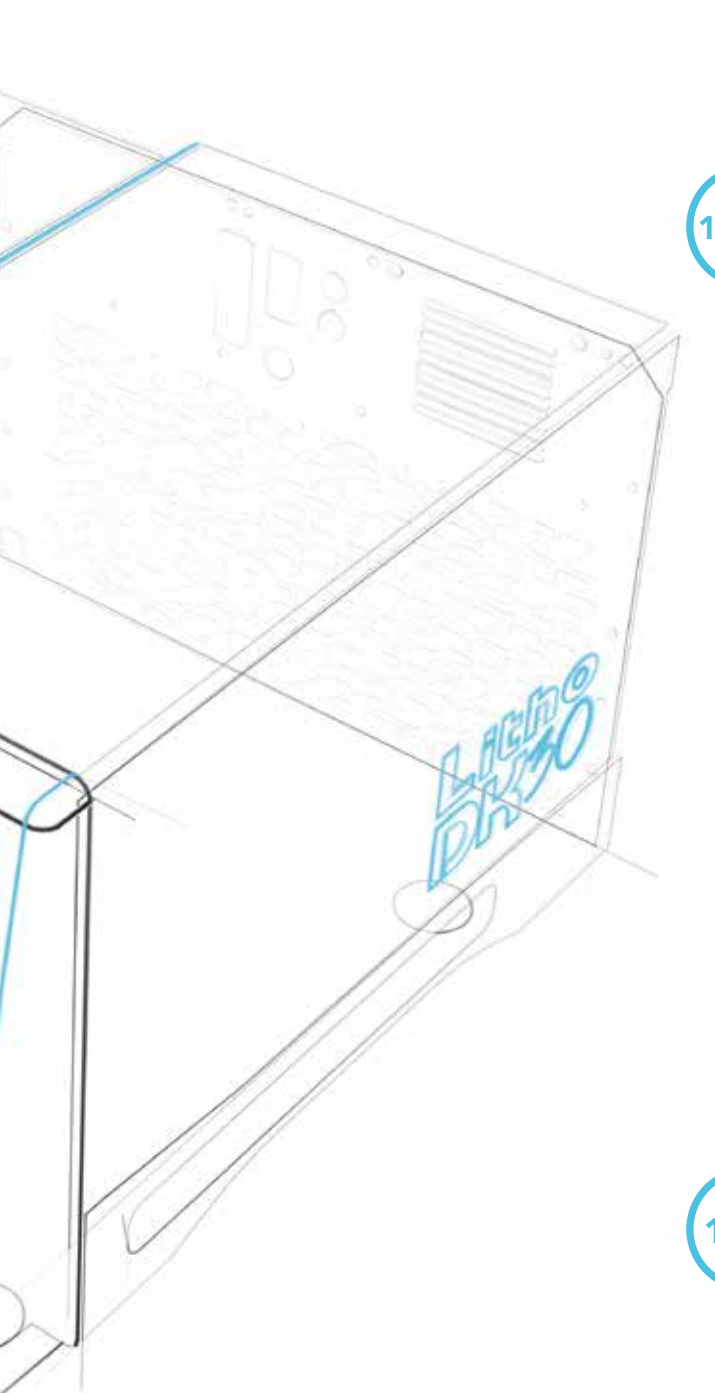
Numbers of Versatility

Emission Modes **4**

Fiber Diameters **6**

Fiber Types **4**

Reliability



1000+

INSTALLATIONS WORLDWIDE

25+

COUNTRIES WHERE
INSTALLED

200+

DOCTORS TRAINED
AT OUR REFERENCE
CENTERS

2008

INTRODUCTION OF THE
FIRST LITHO DK30 MODEL

150+

AVAILABLE COMBINATIONS
OF ENERGY, FREQUENCY AND
PULSE WIDTH

Fibers

Litho DK30 device can be operated with a large range of fibers, depending on the application, flexibility and settings required.



STANDARD FIBERS

For general use in stone and soft tissue treatments



BALL TIP FIBERS

Strongly simplify the insertion in already bent scopes



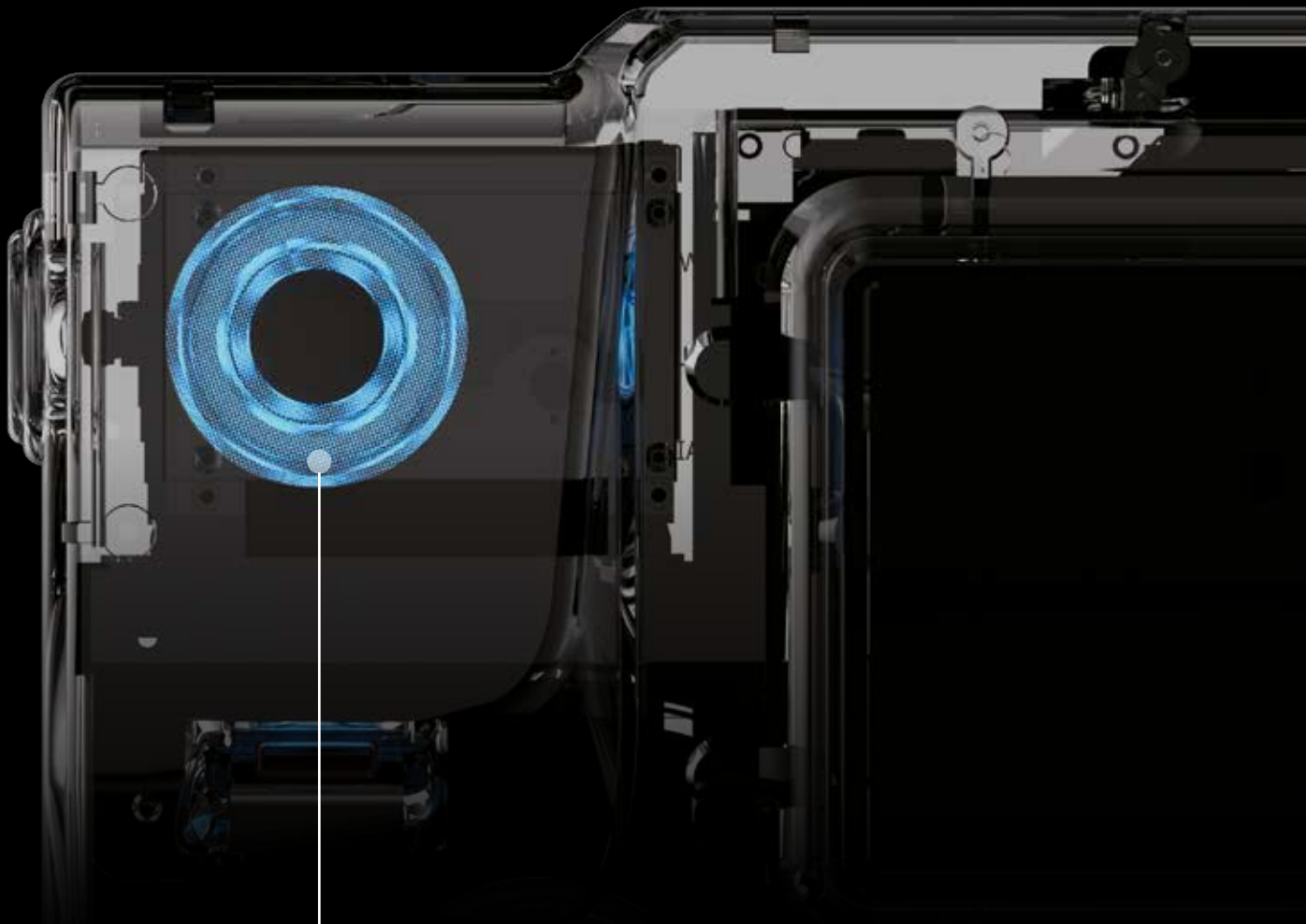
PERFORMANCE FIBERS

Designed to deliver great power even with small fibers



GASTRO FIBERS

Specifically designed for the fragmentation of gallstones



FIBER RECOGNITION

Litho DK30 automatically adjusts emission settings based on the connected fiber diameter



AVAILABLE DIAMETERS

200, 272, 365, 550, 800 and 1000 μm



REUSABILITY

All fibers are available both as disposable and reusable (except ball tip model)



CLEANING

Reusable fibers can be sterilized by Sterrad[®] and steam sterilization

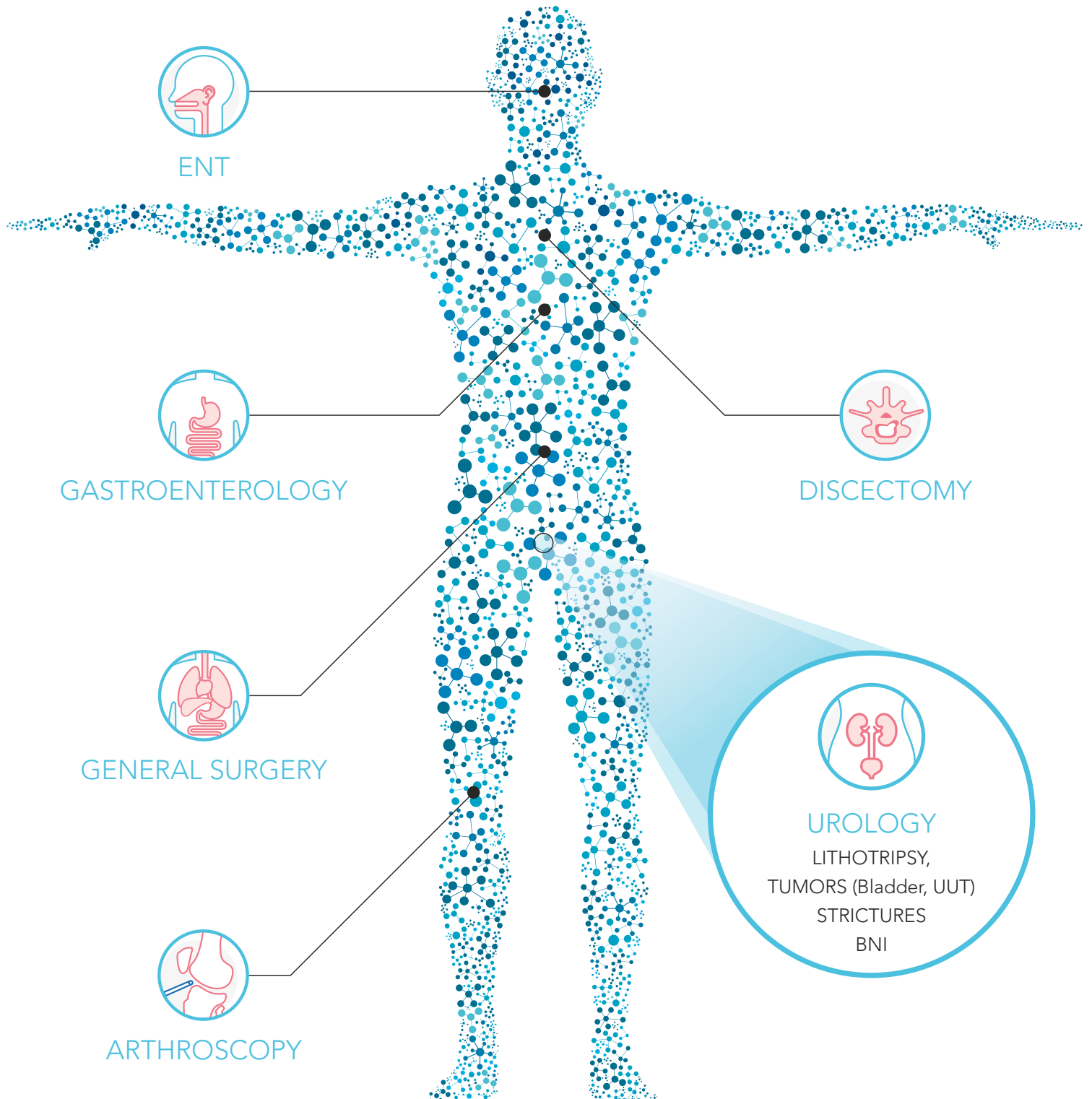


STERILIZATION TRAY

A dedicated tray for sterilization of fibers and tools

Applications

Litho DK30 can be used to perform incision, excision, resection, ablation, vaporization, coagulation and hemostasis of soft tissue and in lithotripsy of stones in various medical specialties, for example:



Technical Specifications

| | |
|--------------------------------|---|
| Wavelength | 2,1 μm |
| Average power | Up to 30 W |
| Repetition rate | 3 \div 25 Hz |
| Energy per pulse | 0,2 \div 4 J |
| Pulse duration | 95 \div 1500 μs |
| Beam delivery | Wide range of flexible silica fibers |
| Aiming beam | 532 nm (adjustable <5 mW) - Class 3R |
| Fiber recognition | RFID System |
| Electrical requirements | 100-120 Vac; 50/60 Hz; 16 A - 200-230 Vac; 50/60 Hz; 10 A |
| Cooling | Closed water air cooling circuit |
| Operating temperature | 10° C - 30° C |
| Humidity | 30% - 85% (no condensing) |
| Dimensions and weigth | 49.5 cm (W) x 63.6 cm (D) x 38.3 cm (H) - 40 kg |

*This brochure is not intended for the U.S. market.
Certain Intended Uses/Configurations/Models/Accessories are not cleared for U.S.*

VISIBLE AND INVISIBLE LASER RADIATION

Avoid eye skin exposure to direct or scattered radiation

Laser product: Class 4

Aiming beam: Class 3R



CAUTION - Laser radiation

CE
0123

Note: National local authorities may put restrictions to the parameters indicated in the table in the previous page, or may limit or remove certain intended uses. Specifications are subject to change without notice.

Quanta System products are manufactured according to the International standards and have been cleared by the most important International notified bodies.

The Company is UNI EN ISO 9001:2015 and EN ISO 13485:2016 certified. Quanta System S.p.A. was founded in 1985 and belongs to the El. En. Group (a public company listed in the Star segment of the Italian Stock Exchange) since January 2004.

The company, divided into three business units (medical, scientific and industrial) is specialized in manufacturing of laser and opto-electronic devices.

Quanta System
LASER IN OUR DNA

